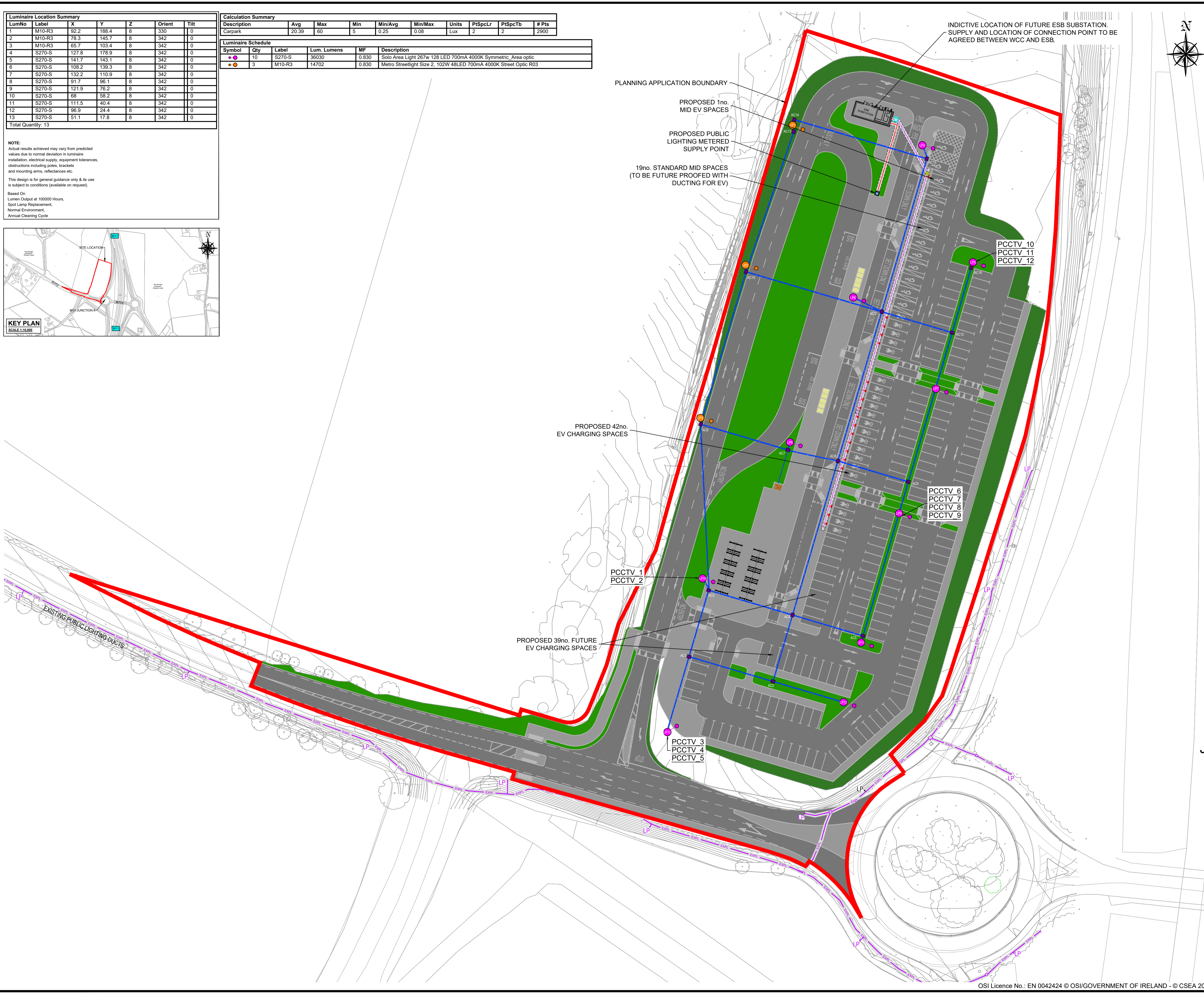
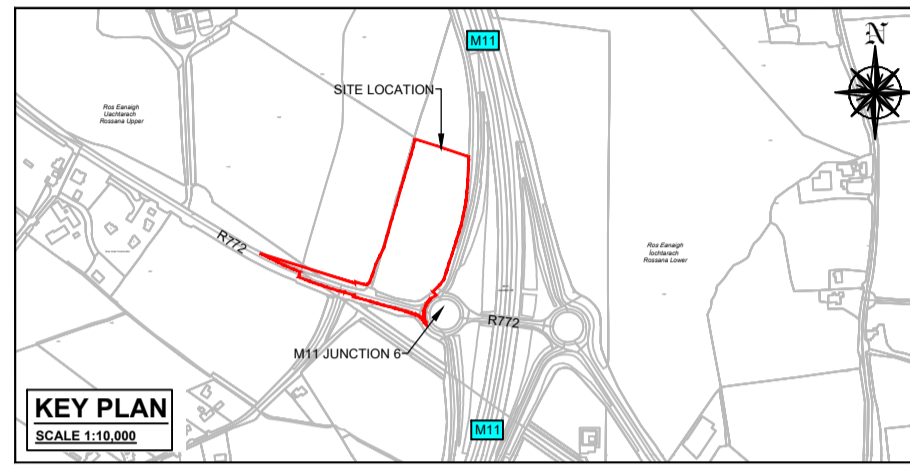


LumNo	Label	X	Y	Z	Orient	Tilt
1	M10-R3	92.2	188.4	8	330	0
2	M10-R3	78.3	145.7	8	342	0
3	M10-R3	65.7	103.4	8	342	0
4	S270-S	127.8	178.9	8	342	0
5	S270-S	141.7	143.1	8	342	0
6	S270-S	108.2	139.3	8	342	0
7	S270-S	132.2	110.9	8	342	0
8	S270-S	91.7	96.1	8	342	0
9	S270-S	121.9	76.2	8	342	0
10	S270-S	68	58.2	8	342	0
11	S270-S	111.5	40.4	8	342	0
12	S270-S	96.9	24.4	8	342	0
13	S270-S	51.1	17.8	8	342	0
Total Quantity: 13						

Description	Avg	Max	Min	Min/Avg	Min/Max	Units	PTSpCLr	PTSpCb	# Pts
Carpark	20.39	60	5	0.25	0.08	Lux	2	2	2900

Symbol	Qty	Label	Lum. Lumens	MF	Description
●	10	S270-S	36030	0.830	Solo Area Light 267w 128 LED 700mA 4000K Symmetric Area optic
●	3	M10-R3	14702	0.830	Metro Streetlight Size 2, 102W 48LED 700mA 4000K Street Optic R03

NOTE:
Actual results achieved may vary from predicted values due to normal deviation in luminaire installation, electrical supply, equipment tolerances, obstructions including poles, brackets and mounting arms, reflectances etc.
This design is for general guidance only & its use is subject to conditions (available on request).
Based On:
Lumen Output at 100000 Hours,
Spot Lume Replacement,
Normal Environment,
Annual Clearing Cycle



DRAWING IS PRODUCED USING THE IRISH TRANSVERSE MERCATOR (ITM) GEOGRAPHIC COORDINATE SYSTEM **A1**



LEGEND	
	PLANNING APPLICATION BOUNDARY
	PROPOSED 2x110mm PUBLIC LIGHTING DUCTING
	PROPOSED 1x160mm ESB DUCT
	PROPOSED PL & CCTV ACCESS CHAMBER
	3 x METRO STREETLIGHT SIZE 2, 102W 48LED 700MA 3000K STREET OPTIC R03 LABEL: M102-R03-3K LUM LUMENS:13526 MF:0.880
	10 x SOLO AREA LIGHT 340W 160 LED 700MA 3000K SYMMETRIC_AREA OPTIC LABEL: S34-3K LUM LUMENS: 38724 MF:0.880
	PROPOSED CCTV CAMERA LOCATIONS
	PROPOSED ACCESS CHAMBER
	PROPOSED EV DUCTING
	PROPOSED ELECTRIC CHARGING STATION
	PROPOSED ESB MASTER CHARGER
	PROPOSED ESB SUBSTATION & SWITCHROOM
	PROPOSED PUBLIC LIGHTING METERED SUPPLY POINT

Rev	Description	SM	AF	25/10/24
P01	ISSUED FOR PLANNING			

Clifton Scannell Emerson Associates
Clifton Scannell Emerson Associates Limited
Consulting Engineers,
3rd Floor The Highline,
Bakers Point, Pottery Road,
Dun Laoghaire, Co. Dublin,
Ireland, A96 KW29
T: +353 1 288 5006
F: +353 1 283 3466
E: info@csea.ie
W: www.csea.ie

WICKLOW COUNTY COUNCIL
Client
ASHFORD PARK AND RIDE FACILITY
Project
PROPOSED PUBLIC LIGHTING ESB AND CCTV LAYOUT
Dwg. Title
Drawn By: SM Date: OCT 2024
Checked By: AF Scale: 1:500 @ A1
Project Code: Originator: Zone/Phase: Level: Type: Role: Dwg. No.
20_008L - CSE - GEN - XX - DR - C - 2600
S02 PART VIII APPROVAL
P01 FOR PLANNING